



## Manual wire marking

for cables and components

# Ademark Wire Markers



Ademark is a marking system which allows users to carry out all types of marking and identification necessary for panels, uniformly and quickly. Ademark Wire Marking is standardised and can be composed and inserted into various types of sleeves and tags.

Ademark Wire Marking	
Temperature Range	-30 to +80°C
Material	PVC
Self-Extinguishing	UL94V0

## P3 Ademark Wire Marking

Ademark wire markers are modular: a single series of numbers and letters to compose any marking. Applied on adhesive strips, they can be removed quickly and inserted into sleeves. The markers are oval with holding tabs.

The strips are composed of:

- 25 markers – width mm 3
- M.O.Q 1,000 pieces

Marking: Black on White, Black on Yellow, Coloured 0-9, A-Z, a-z, + -/.= ~ Δ Y Ground International colour code



Order reference	Colour	Legend
<b>P3 Ademark Wire Markers</b>		
ST3W00	White	0
ST3W01	White	1
ST3W02	White	2
ST3W03	White	3
ST3W04	White	4
ST3W05	White	5
ST3W06	White	6
ST3W07	White	7
ST3W08	White	8
ST3W09	White	9
ST3WLA	White	A
ST3WLB	White	B
ST3WLC	White	C
ST3WLD	White	D
ST3WLE	White	E
ST3WLF	White	F
ST3WLG	White	G
ST3WLH	White	H
ST3WLI	White	I
ST3WLJ	White	J
ST3WLK	White	K
ST3WLL	White	L
ST3WLM	White	M
ST3WLN	White	N
ST3WLP	White	P
ST3WLQ	White	Q
ST3WLR	White	R
ST3WLS	White	S
ST3WLT	White	T
ST3WLU	White	U
ST3WLV	White	V
ST3WLW	White	W
ST3WLX	White	X
ST3WLY	White	Y
ST3WLZ	White	Z
ST3WSA	White	CA
ST3WSB	White	/
ST3WSC	White	,
ST3WSD	White	:
ST3WSE	White	=
ST3WSH	White	ground
ST3WSM	White	-
ST3WSP	White	+
ST3WST	White	.
ST3WSX	White	*
ST3WWW	White	na

Order reference	Colour	Legend
<b>P3 Ademark Wire Markers</b>		
ST3Y00	Yellow	0
ST3Y01	Yellow	1
ST3Y02	Yellow	2
ST3Y03	Yellow	3
ST3Y04	Yellow	4
ST3Y05	Yellow	5
ST3Y06	Yellow	6
ST3Y07	Yellow	7
ST3Y08	Yellow	8
ST3Y09	Yellow	9
ST3YLA	Yellow	A
ST3YLB	Yellow	B
ST3YLC	Yellow	C
ST3YLD	Yellow	D
ST3YLE	Yellow	E
ST3YLF	Yellow	F
ST3YLG	Yellow	G
ST3YLH	Yellow	H
ST3YLI	Yellow	I
ST3YLJ	Yellow	J
ST3YLK	Yellow	K
ST3YLL	Yellow	L
ST3YLM	Yellow	M
ST3YLN	Yellow	N
ST3YLP	Yellow	P
ST3YLQ	Yellow	Q
ST3YLR	Yellow	R
ST3YLS	Yellow	S
ST3YLT	Yellow	T
ST3YLU	Yellow	U
ST3YLV	Yellow	V
ST3YLW	Yellow	W
ST3YLY	Yellow	X
ST3YLY	Yellow	Y
ST3YLZ	Yellow	Z
ST3YSB	Yellow	/
ST3YSH	Yellow	ground
ST3YSM	Yellow	-
ST3YSP	Yellow	+
ST3YST	Yellow	.
ST3YSX	Yellow	*
ST3YYY	Yellow	Neutral

Order reference	Colour	Legend
<b>P3 Ademark Wire Markers</b>		
ST3BBB	Brown	na
ST3GGG	Grey	Neutral
ST3I00	Black	0
ST3I01	Brown	1
ST3I02	Red	2
ST3I03	Orange	3
ST3I04	Yellow	4
ST3I05	Green	5
ST3I06	Blue	6
ST3I07	Purple	7
ST3I08	Grey	8
ST3III	Purple	Neutral
ST3LLL	Blue	Neutral
ST3NNN	Black	Neutral
ST3OOO	Orange	Neutral
ST3RRR	Red	Neutral
ST3VVV	Green	Neutral

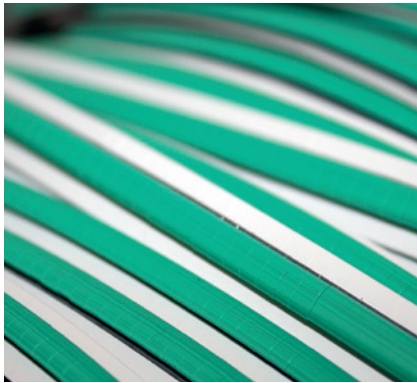
### P2.3 Ademark Wire Marking

Ademark wire markers are modular: a single series of numbers and letters to compose any marking. Applied on adhesive strips, they can be removed quickly and inserted into sleeves. The markers are oval with holding tabs.

The strips are composed of:

- 30 markers – width mm 2.3
- M.O.Q 1,000 pieces

Marking: Black on White, Black on Yellow, Coloured 0-9, A-Z, a-z, + -/ . = ~ Δ Y Ground International colour code



Order reference	Colour	Legend
<b>P2.3 Ademark Wire Markers</b>		
ST2W00	White	0
ST2W01	White	1
ST2W02	White	2
ST2W03	White	3
ST2W04	White	4
ST2W05	White	5
ST2W06	White	6
ST2W07	White	7
ST2W08	White	8
ST2W09	White	9
ST2WLA	White	A
ST2WLB	White	B
ST2WLC	White	C
ST2WLD	White	D
ST2WLE	White	E
ST2WLF	White	F
ST2WLG	White	G
ST2WLH	White	H
ST2WLI	White	I
ST2WLJ	White	J
ST2WLK	White	K
ST2WLL	White	L
ST2WLM	White	M
ST2WLN	White	N
ST2WLP	White	P
ST2WLQ	White	Q
ST2WLR	White	R
ST2WLS	White	S
ST2WLT	White	T
ST2WLU	White	U
ST2WLV	White	V
ST2WLW	White	W
ST2WLX	White	X
ST2WLY	White	Y
ST2WLZ	White	Z
ST2WSA	White	CA
ST2WSB	White	/
ST2WSE	White	=
ST2WSF	White	DELTA
ST2WSH	White	ground
ST2WSL	White	<-
ST2WSM	White	-
ST2WSP	White	+
ST2WSR	White	->
ST2WST	White	.
ST2WWW	White	Neutral

Order reference	Colour	Legend
<b>P2.3 Ademark Wire Markers</b>		
ST2Y00	Yellow	0
ST2Y01	Yellow	1
ST2Y02	Yellow	2
ST2Y03	Yellow	3
ST2Y04	Yellow	4
ST2Y05	Yellow	5
ST2Y06	Yellow	6
ST2Y07	Yellow	7
ST2Y08	Yellow	8
ST2Y09	Yellow	9
ST2YLA	Yellow	A
ST2YLB	Yellow	B
ST2YLC	Yellow	C
ST2YLD	Yellow	D
ST2YLE	Yellow	E
ST2YLF	Yellow	F
ST2YLG	Yellow	G
ST2YLH	Yellow	H
ST2YLI	Yellow	I
ST2YLJ	Yellow	J
ST2YLK	Yellow	K
ST2YLL	Yellow	L
ST2YLM	Yellow	M
ST2YLN	Yellow	N
ST2YLP	Yellow	P
ST2YLQ	Yellow	Q
ST2YLR	Yellow	R
ST2YLS	Yellow	S
ST2YLT	Yellow	T
ST2YLU	Yellow	U
ST2YLV	Yellow	V
ST2YLW	Yellow	W
ST2Y LX	Yellow	X
ST2YLY	Yellow	Y
ST2YLZ	Yellow	Z
ST2YSB	Yellow	/
ST2YSD	Yellow	:
ST2YSE	Yellow	=
ST2YSH	Yellow	ground
ST2YSL	Yellow	<-
ST2YSM	Yellow	-
ST2YSP	Yellow	+
ST2YST	Yellow	.
ST2YSX	Yellow	*
ST2YYY	Yellow	na

Order reference	Colour	Legend
<b>P2.3 Ademark Wire Markers</b>		
ST2BBB	Brown	Neutral
ST2GGG	Grey	Neutral
ST2I00	Black	0
ST2I01	Brown	1
ST2I02	Red	2
ST2I03	Orange	3
ST2I05	Green	5
ST2I06	Blue	6
ST2I07	Purple	7
ST2I08	Grey	8
ST2III	Purple	Neutral
ST2LLL	Blue	Neutral
ST2NNN	Black	Neutral
ST2OOO	Orange	Neutral
ST2RRR	Red	Neutral
ST2VVV	Green	Neutral

### Ademark Tool

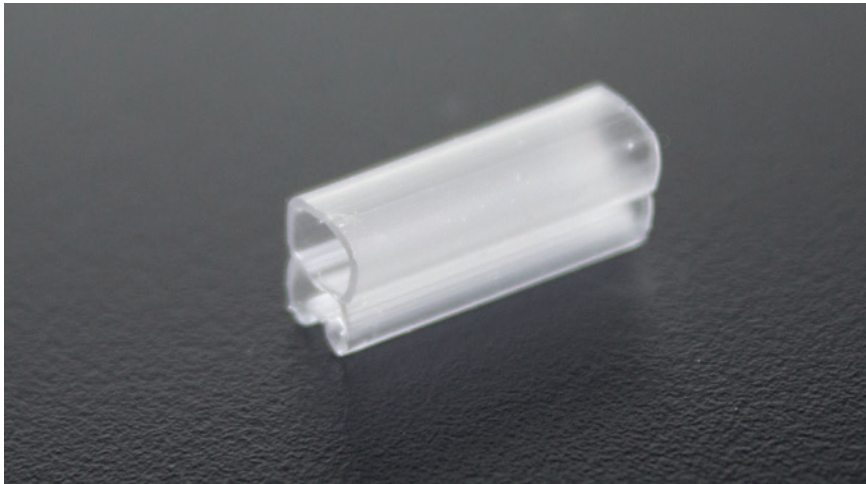
In specially shaped burnished steel for composing marks and inserting them into sleeves.

The ring is inserted with the slightly angled tool and is removed by bending the tool toward the operator

Order reference	Description	Quantity
SAT15R	Length 15mm, plastic-covered handle	1
SAUN15	Uncino Ademark-Unimark	1



# ADEMARK SLEEVES

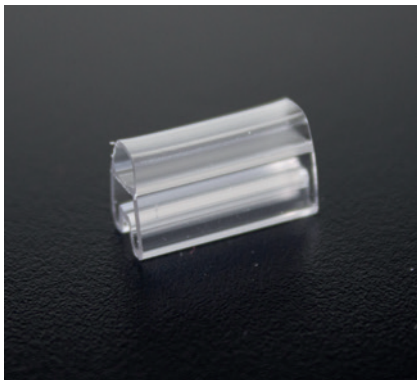


▶ Can be used with Ademark wire markers, Unimark wire markers, ACS Tags, Rigid Inserts

## Ademark Sleeves

Ademark sleeves are in transparent PVC. The particular shape of the sleeves helps them to fit to cables of various diameters, minimizing inventories. Only seven types of cable sleeves with external diameter from 1.3 to 24 mm.

Ademark Sleeves	
Temperature Range	-50° to + 80°c
Material	PVC
Self-Extinguishing	UL94V0



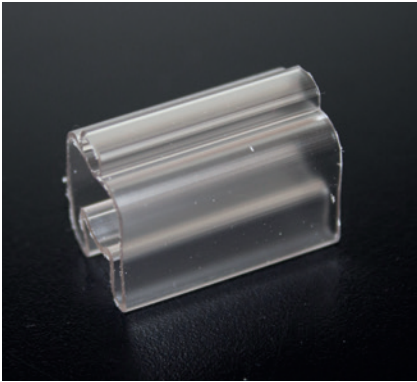
Model	Diam. External mm	Approx. Section mm <sup>2</sup>
Model 0	external diam. of cable mm 1.3-2.0	0.22-0.5
Model 1	external diam. of cable mm 1.8-2.5	0.5-1.5
Model 2	external diam. of cable mm 2.5-4.0	0.75-2.5
Model 3	external diam. of cable mm 4-6.5	2.5-6.0
Model 4	external diam. of cable mm 6-10	10-35
Model 5	external diam. of cable mm 9-15	25-70
Model 6	external diam. of cable mm 15-24	35-120

## Sleeve Length mm 10

Order reference	Mod	External diameter (mm)	Wire section mm <sup>2</sup>	Qty	M.O.Q.
SA0010	0x10	1.3 - 2.0	0.22 - 0.5	1000	2000
	1x10	1.8 - 2.5	0.5 - 1.5	1000	2000
SA0210	2x10	2.5 - 4.0	0.75 - 2.5	1000	2000
SA0310	3x10	4.0 - 6.5	2.5 - 6.0	1000	1000
SA0410	4x10	6.0 - 10.0	10.0 - 35.0	1000	1000
SA0510	5x10	9.0 - 15.0	25.0 - 70.0	1000	1000
SA0610	6x10	15.0 - 24.0	35.0 - 120.0	1000	500

## Sleeve Length mm 12

Order reference	Mod	External diameter (mm)	Wire section mm <sup>2</sup>	Qty	M.O.Q.
SA0012	0x12	1.3 - 2.0	0.22 - 0.5	1000	2000
SA0112	1x12	1.8 - 2.5	0.5 - 1.5	1000	2000
SA0212	2x12	2.5 - 4.0	0.75 - 2.5	1000	2000
SA0312	3x12	4.0 - 6.5	2.5 - 6.0	1000	1000
SA0412	4x12	6.0 - 10.0	10.0 - 35.0	1000	1000
SA0512	5x12	9.0 - 15.0	25.0 - 70.0	1000	1000
SA0612	6x12	15.0 - 24.0	35.0 - 120.0	1000	500



### Sleeve Length mm 16

Order reference	Mod	Qty	M.O.Q.
SA0016	0x16	1000	2000
SA0116	1x16	1000	2000
SA0216	2x16	1000	2000
SA0316	3x16	1000	1000
SA0416	4x16	1000	1000
SA0516	5x16	1000	750
SA0616	6x16	1000	500

### Sleeve Length mm 18

Order reference	Mod	Qty	M.O.Q.
SA0018	0x18	1000	2000
SA0118	1x18	1000	2000
SA0218	2x18	1000	2000
SA0318	3x18	1000	1000
SA0418	4x18	1000	1000
SA0518	5x18	1000	750
SA0618	6x18	1000	500

### Sleeve Length mm 23

Order reference	Mod	Qty	M.O.Q.
SA0023	0x23	1000	2000
SA0123	1x23	1000	2000
SA0223	2x23	1000	2000
SA0323	3x23	1000	1000
SA0423	4x23	1000	1000
SA0523	5x23	1000	500
SA0623	6x23	1000	500

### Sleeve Length mm 30

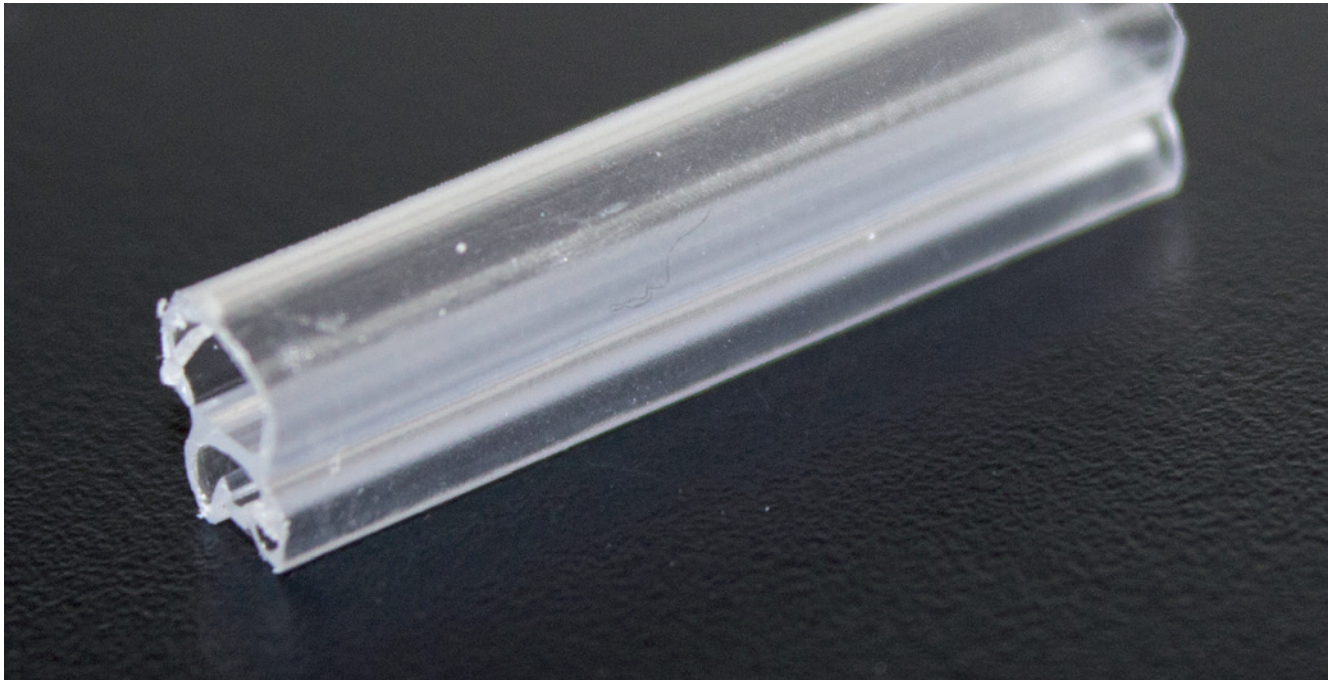
Order reference	Mod	Qty	M.O.Q.
SA0030	0x30	1000	1000
SA0130	1x30	1000	1500
SA0230	2x30	1000	1000
SA0330	3x30	1000	1000
SA0430	4x40	1000	500
SA0530	5x30	1000	500
SA0630	6x30	1000	200

### Sleeves in Skeins

Order reference	Mod	Qty	M.O.Q.
SA00MT	0	100	50
SA01MT	1	100	50
SA02MT	2	100	50
SA03MT	3	100	50
SA04MT	4	100	50
SA05MT	5	100	25
SA06MT	6	100	25

# Ademark Sleeves

## Halogen Free



▶ Can be used with Ademark wire markers, Unimark wire markers, ACS wire markers, Rigid Inserts

### Ademark Sleeves

The particular shape of the sleeves helps them to fit to cables of various diameters, minimizing inventories. Only five types of cable sleeves with external diameter from 1.3 to 10 mm.

#### Ademark Sleeves

Temperature Range -40 to +80°C

Material EVA ESCORENE

Model	Diam. External mm	Approx. Section mm <sup>2</sup>
Model 0	external diam. of cable mm 1.3-2.0	0.22-0.5
Model 1	external diam. of cable mm 1.8-2.5	0.5-1.5
Model 2	external diam. of cable mm 2.5-4.0	0.75-2.5
Model 3	external diam. of cable mm 4-6.5	2.5-6.0
Model 4	external diam. of cable mm 6-10	10-35



### Sleeve Length mm 12

Order reference	Mod	Qty	M.O.Q.
ES0012	0x12	1000	2000
ES0112	1x12	1000	2000
ES0212	2x12	1000	2000
ES0312	3x12	1000	1000
ES0412	4x12	1000	1000

### Sleeve Length mm 18

Order reference	Mod	Qty	M.O.Q.
ES0018	0x18	1000	2000
ES0118	1x18	1000	2000
ES0218	2x18	1000	2000
ES0318	3x18	1000	1000
ES0418	4x18	1000	1000

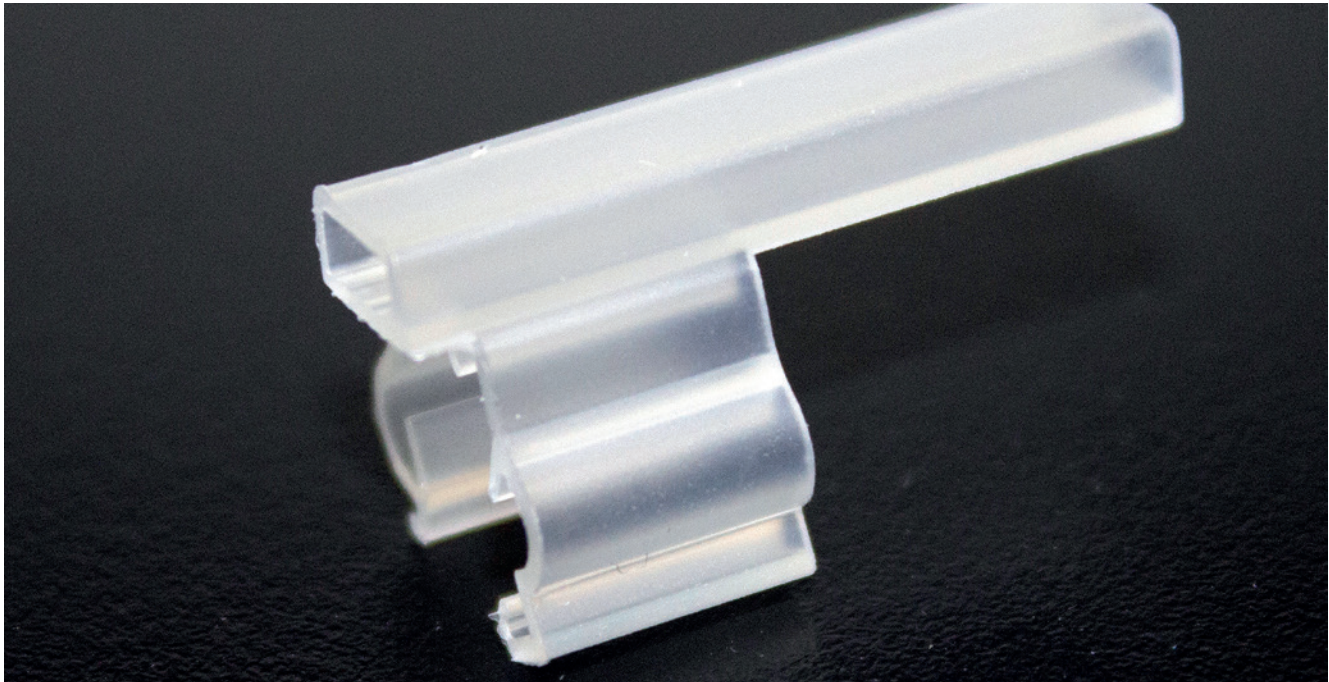
### Sleeve Length mm 23

Order reference	Mod	Qty	M.O.Q.
ES0023	0x23	1000	2000
ES0123	1x23	1000	2000
ES0223	2x23	1000	1000
ES0323	3x23	1000	1000
ES0423	4x23	1000	500

### Sleeve Length mm 30

Order reference	Mod	Qty	M.O.Q.
ES0030	0x30	1000	1000
ES0130	1x30	1000	1500
ES0230	2x30	1000	1000
ES0330	3x30	1000	1000
ES0430	4x30	1000	500

# Clip-Lock Sleeves Adhesive Sleeves



## Clip-Lock Sleeves

For marking prewired cables. Apply onto cables and lock with a snap closure. Suitable for Ademark markers and ACS 4x23 Tags.

## Clip-Lock Sleeves for Ademark Markers and Acs Wire Markers 4X23

Order reference	Mod	For wires diam min/max (mm)	Qty	M.O.Q.
CLIP01	1x23	1.7 - 3.00	1000	1000
CLIP02	2x23	2.5 - 3.5	1000	1000
CLIP03	3x23	3.3 - 4.8	1000	1000
CLIP04	4x23	4.2 - 5.6	1000	1000
CLIP05	5x23	5.0 - 7.0	1000	1000

Material: thermoplastic elastomer (TPE), UL94 class HB  
 Operating temperature: -30 + 80°C,  
 Colour: transparent.

## Adhesive Sleeves

Ademark adhesive sleeves are made of white rigid PVC with a transparent part. They allow for the marking of instruments, components, etc.



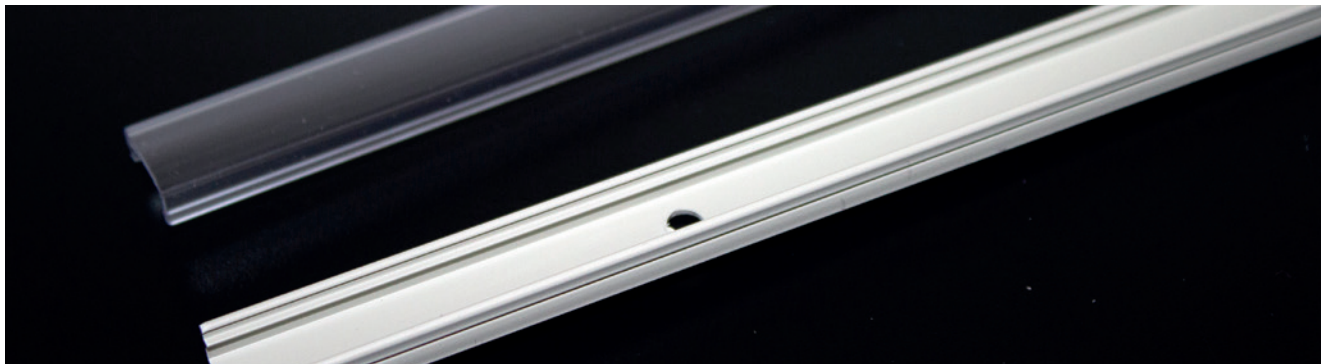
## Adhesive Tags for Ademark Wire Markers and Acs Tags

Order reference	Length (mm)	Width (mm)	Qty	M.O.Q.
SATA12	12	9	1000	1000
SATA16	16	9	1000	1000
SATA18	18	9	1000	1000
SATA22	22	9	1000	1000
SATA25	25	9	1000	1000

Upon request: special lengths SATASP



# Clip-Channel Tags Sleeves for Cable Ties



## Clip Tags

Made in gray rigid PVC with a number holding pocket in transparent PVC.

The tags hook directly onto the Siemens contactors and on special tracks at any point, allowing aesthetically valid marking for components in series.

## Channel With Holes, Adhesive Channel, Cover for Tracks

Gray, rigid PVC track with holed or adhesive base.

Transparent rigid PVC cover. Channel dimensions: height 6.5 mm width mm 11

## Sleeves for Cable Ties

Sleeves in transparent PVC, used with FL type cable ties (width up to 4.8 mm) allow for the marking of cables, cable bundles, conduits, pipes, etc.



## Clip Sleeves For Ademark Wire Markers And Acs Wire Markers: 4X12, 4X18, 4X23

Order reference	Mod	Qty	M.O.Q.
SABI1A	Adhesive bars - 100 cm	100	50
SABI1F	Holed bars - 100 cm	100	50
SABIAD	Adhesive bars - 50 cm	100	50
SABIC1	Covers - 100 cm	100	50
SABIC5	Covers - 50 cm	100	50
SABIFO	Holed bars - 50cm	100	50
SATC00	Size 9x20mm	1000	1000

### Channel

Temperature Range	-30 to +80°C
Material	PVC
Self-Extinguishing	UL94V0

### Sleeves For Cable Ties

Temperature Range	-30 to +60°C
Material	PVC
Self-Extinguishing	UL94V0

## For Ademark Markers and Acs Wire Markers: 4X12, 4X18, 4X23

Order reference	Description	Legend	Qty	M.O.Q.
SA0916	Model 9 - Length 16mm	(vide)	1000	2000
SA09MT	Model 9 - Coil 100m	(vide)	100	100
SA1018	Model 10 - Length 18mm (1 strip)	(vide)	1000	1000
SA1023	Model 10 - Length 23mm (1 strip)	(vide)	1000	1000
SA1028	Model 10 - Length 28mm (1 strip)	(vide)	1000	1000
SA1032	Model 10 - Length 32mm (2 strips)	(vide)	1000	1000
SA1036	Model 10 - Length 36mm (2 strips)	(vide)	1000	1000
SA1047	Model 10 - Length 47mm (2 strips)	(vide)	1000	1000

## Sleeve Model 11 for Cable Ties

Order reference	Description	Qty
SA1121	Length 21mm for ACS tags 9x20mm (SA920N) for 1 cable tie	1000
SA1135	Length 36mm for ACS tags 9x35mm (SA935N) for 2 cable ties	1000

# Manual Identification

## Ademark Wire Markers

Special, very elastic polyvinyl chloride ring, semi-cut to form a chain from which they can be removed one by one. Each ring is ready instantly, never overturned, never mixed with others, never lost.

### Elastic

Each size inserts into various diameter cables.

**In chains** - do not get lost, are always in the proper direction. Assembly - Insuperably rapid,

**Economical** - Low cost, minimum installation time

**Minimum encumbrance** - are inserted directly onto wires without the use of sleeves.

**Ease of use** - Spools of 1000/500 pieces minimize waste in terms of time, as stops for supply are minimised.

### Numeric Ring Chain

Semi-cut, white with black marking, yellow with black marking upon request. Numbers, Letters, Symbols: + - / . = ~ Ground or coloured. International colour code.

- Internal diameter: 0.8mm
- Quantity: 1000
- M.O.Q: 5000
- Internal diameter 0.8mm

Ring Chain	Pack
from diam. 0.8 to 3 mm	5 spools from 1,000 pieces
from diam. 3.5 a 4.5 mm	5 spools from 500 pieces
diam. 6 mm	4 spools from 500 pieces



Order reference	Colour	Legend
AC08NB	Brown	Neutral
AC08NG	Grey	Neutral
AC08NI	Purple	Neutral
AC08NL	Blue	Neutral
AC08NN	Black	Neutral
AC08NO	Orange	Neutral
AC08NR	Red	Neutral
AC08NV	Green	Neutral
AC08NW	White	Neutral
AC08NY	Yellow	Neutral
AC08WB	White	/
AC08WM	White	-
AC08WP	White	+
AC08YM	Yellow	-
AC08YP	Yellow	+
AC0I08	Black	0
AC0W08	White	0
AC0Y08	Yellow	0
AC1I08	Brown	1
AC1W08	White	1
AC1Y08	Yellow	1
AC2I08	Red	Neutral
AC2W08	White	2
AC2Y08	Yellow	2
AC3I08	Orange	3
AC3W08	White	3
AC3Y08	Yellow	3
AC4W08	White	4
AC4Y08	Yellow	4
AC5I08	Green	5
AC5W08	White	5
AC5Y08	Yellow	5

Order reference	Colour	Legend
AC6I08	Blue	6
AC6W08	White	6
AC6Y08	Yellow	6
AC7I08	Purple	7
AC7W08	White	7
AC7Y08	Yellow	7
AC8I08	Grey	8
AC8W08	White	8
AC8Y08	Yellow	8
AC9W08	White	9
AC9Y08	Yellow	9
ACAW08	White	A
ACAY08	Yellow	A
ACBW08	White	B
ACBY08	Yellow	B
ACCW08	White	C
ACCY08	Yellow	C
ACDP08	Pink	D
ACDW08	White	D
ACDY08	Yellow	D
ACEW08	White	E
ACEY08	Yellow	E
ACFW08	White	F
ACFY08	Yellow	F
ACGW08	White	G
ACGY08	Yellow	G
ACHW08	White	H
ACHY08	Yellow	H
ACIW08	White	I
ACIY08	Yellow	I
ACJW08	White	J
ACJY08	Yellow	J

Order reference	Colour	Legend
ACKW08	White	K
ACKY08	Yellow	K
ACLW08	White	L
ACLY08	Yellow	L
ACMW08	White	M
ACMY08	Yellow	M
ACNW08	White	N
ACNY08	Yellow	N
ACPW08	White	P
ACPY08	Yellow	P
ACQW08	White	Q
ACQY08	Yellow	Q
ACRW08	White	R
ACRY08	Yellow	R
ACSW08	White	S
ACSY08	Yellow	S
ACTW08	White	T
ACTY08	Yellow	T
ACUW08	White	U
ACUY08	Yellow	U
ACVW08	White	V
ACVY08	Yellow	V
ACWV08	White	W
ACWY08	Yellow	W
ACXW08	White	X
ACXY08	Yellow	X
ACYW08	White	Y
ACYY08	Yellow	Y
ACZW08	White	Z
ACZY08	Yellow	Z

## Numeric Ring Chain

Semi-cut, white with black marking, yellow with black marking upon request. Numbers, Letters, Symbols: + - / . = ~ Ground or coloured. International colour code.

- Internal diameter: 1.5mm
- Quantity: 1000
- M.O.Q: 5000
- Internal diameter 1.5mm



Order reference	Colour	Legend
AC0I15	Black	0
AC0W15	White	0
AC0Y15	Yellow	0
AC15NB	Brown	Neutral
AC15NG	Grey	Neutral
AC15NI	Purple	Neutral
AC15NL	Blue	Neutral
AC15NN	Black	Neutral
AC15NO	Orange	Neutral
AC15NP	Pink	Neutral
AC15NR	Red	Neutral
AC15NV	Green	Neutral
AC15NW	White	Neutral
AC15NY	Yellow	Neutral
AC15WB	White	/
AC15WH	White	ground
AC15WM	White	-
AC15WP	White	+
AC15WT	White	.
AC15YB	Yellow	/
AC15YH	Yellow	ground
AC15YM	Yellow	-
AC15YP	Yellow	+
AC15YT	Yellow	.
AC1I15	Brown	1
AC1W15	White	1
AC1Y15	Yellow	1
AC2I15	Red	Neutral
AC2W15	White	2
AC2Y15	Yellow	2
AC3I15	Orange	3
AC3W15	White	3
AC3Y15	Yellow	3

Order reference	Colour	Legend
AC4W15	White	4
AC4Y15	Yellow	4
AC5I15	Green	5
AC5W15	White	5
AC5Y15	Yellow	5
AC6I15	Blue	6
AC6W15	White	6
AC6Y15	Yellow	6
AC7I15	Purple	7
AC7W15	White	7
AC7Y15	Yellow	7
AC8I15	Grey	8
AC8W15	White	8
AC8Y15	Yellow	8
AC9W15	White	9
AC9Y15	Yellow	9
ACAW15	White	A
ACAY15	Yellow	A
ACBW15	White	B
ACBY15	Yellow	B
ACCW15	White	C
ACCY15	Yellow	C
ACDW15	White	D
ACDY15	Yellow	D
ACEW15	White	E
ACEY15	Yellow	E
ACFW15	White	F
ACFY15	Yellow	F
ACGW15	White	G
ACGY15	Yellow	G
ACHW15	White	H
ACHY15	Yellow	H
ACIW15	White	I

Order reference	Colour	Legend
ACIY15	Yellow	I
ACJW15	White	J
ACJY15	Yellow	J
ACKW15	White	K
ACKY15	Yellow	K
ACLW15	White	L
ACLY15	Yellow	L
ACMW15	White	M
ACMY15	Yellow	M
ACNW15	White	N
ACNY15	Yellow	N
ACPW15	White	P
ACPY15	Yellow	P
ACQW15	White	Q
ACQY15	Yellow	Q
ACRW15	White	R
ACRY15	Yellow	R
ACSW15	White	S
ACSY15	Yellow	S
ACTW15	White	T
ACTY15	Yellow	T
ACUW15	White	U
ACUY15	Yellow	U
ACVW15	White	V
ACVY15	Yellow	V
ACWW15	White	W
ACWY15	Yellow	W
ACXW15	White	X
ACXY15	Yellow	X
ACYW15	White	Y
ACYY15	Yellow	Y
ACZW15	White	Z
ACZY15	Yellow	Z

## Numeric Ring Chain

Semi-cut, white with black marking, yellow with black marking upon request. Numbers, Letters, Symbols: + - / . = ~ Ground or coloured. International colour code.

- Internal diameter: 2.0mm
- Quantity: 1000
- M.O.Q: 5000
- Internal diameter 2mm



Order reference	Colour	Legend
AC0I20	Black	0
AC0W20	White	0
AC0Y20	Yellow	0
AC1I20	Brown	1
AC1W20	White	1
AC1Y20	Yellow	1
AC20NB	Brown	Neutral
AC20NG	Grey	Neutral
AC20NI	Purple	Neutral
AC20NL	Blue	Neutral
AC20NN	Black	Neutral
AC20NO	Orange	Neutral
AC20NR	Red	Neutral
AC20NV	Green	Neutral
AC20NW	White	Neutral
AC20NY	Yellow	Neutral
AC20WB	White	/
AC20WH	White	ground
AC20WM	White	-
AC20WP	White	+
AC20WT	White	.
AC20YB	Yellow	/
AC20YH	Yellow	ground
AC20YM	Yellow	-
AC20YP	Yellow	+
AC20YT	Yellow	.
AC2I20	Red	Neutral
AC2W20	White	2
AC2Y20	Yellow	2
AC3I20	Orange	3
AC3W20	White	3
AC3Y20	Yellow	3
AC4W20	White	4
AC4Y20	Yellow	4

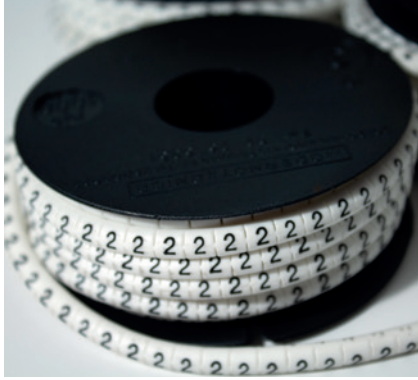
Order reference	Colour	Legend
AC5I20	Green	5
AC5W20	White	5
AC5Y20	Yellow	5
AC6I20	Blue	6
AC6W20	White	6
AC6Y20	Yellow	6
AC7I20	Purple	7
AC7W20	White	7
AC7Y20	Yellow	7
AC8I20	Grey	8
AC8W20	White	8
AC8Y20	Yellow	8
AC9W20	White	9
AC9Y20	Yellow	9
ACAW20	White	A
ACAY20	Yellow	A
ACBP20	Pink	B
ACBW20	White	B
ACBY20	Yellow	B
ACCP20	Pink	C
ACCW20	White	C
ACCY20	Yellow	C
ACDW20	White	D
ACDY20	Yellow	D
ACEW20	White	E
ACEY20	Yellow	E
ACFW20	White	F
ACFY20	Yellow	F
ACGW20	White	G
ACGY20	Yellow	G
ACHW20	White	H
ACHY20	Yellow	H
ACIW20	White	I
ACIY20	Yellow	I

Order reference	Colour	Legend
ACJW20	White	J
ACJY20	Yellow	J
ACKW20	White	K
ACKY20	Yellow	K
ACLW20	White	L
ACLY20	Yellow	L
ACMW20	White	M
ACMY20	Yellow	M
ACNW20	White	N
ACNY20	Yellow	N
ACPW20	White	P
ACPY20	Yellow	P
ACQW20	White	Q
ACQY20	Yellow	Q
ACRW20	White	R
ACRY20	Yellow	R
ACSW20	White	S
ACSY20	Yellow	S
ACTW20	White	T
ACTY20	Yellow	T
ACUW20	White	U
ACUY20	Yellow	U
ACVW20	White	V
ACVY20	Yellow	V
ACWW20	White	W
ACWY20	Yellow	W
ACXW20	White	X
ACXY20	Yellow	X
ACYW20	White	Y
ACYY20	Yellow	Y
ACZW20	White	Z
ACZY20	Yellow	Z

## Numeric Ring Chain

Semi-cut, white with black marking, yellow with black marking upon request. Numbers, Letters, Symbols: + - / . = ~ Ground or coloured. International colour code.

- Internal diameter: 3.0mm
- Quantity: 1000
- M.O.Q: 5000
- Internal diameter 3mm



Order reference	Colour	Legend
AC0I30	Black	0
AC0W30	White	0
AC0Y30	Yellow	0
AC1I30	Brown	1
AC1W30	White	1
AC1Y30	Yellow	1
AC2I30	Red	Neutral
AC2W30	White	2
AC2Y30	Yellow	2
AC30NB	Brown	Neutral
AC30NG	Grey	Neutral
AC30NI	Purple	Neutral
AC30NL	Blue	Neutral
AC30NN	Black	Neutral
AC30NO	Orange	Neutral
AC30NR	Red	Neutral
AC30NV	Green	Neutral
AC30NW	White	Neutral
AC30NY	Yellow	Neutral
AC30WA	White	-
AC30WB	White	/
AC30WC	White	C.A.
AC30WH	White	ground
AC30WM	White	-
AC30WP	White	+
AC30WT	White	.
AC30YB	Yellow	/
AC30YH	Yellow	ground
AC30YM	Yellow	-
AC30YP	Yellow	+
AC30YT	Yellow	.
AC3I30	Orange	3
AC3W30	White	3
AC3Y30	Yellow	3
AC4W30	White	4

Order reference	Colour	Legend
AC4Y30	Yellow	4
AC5I30	Green	5
AC5W30	White	5
AC5Y30	Yellow	5
AC6I30	Blue	6
AC6W30	White	6
AC6Y30	Yellow	6
AC7I30	Purple	7
AC7W30	White	7
AC7Y30	Yellow	7
AC8I30	Grey	8
AC8W30	White	8
AC8Y30	Yellow	8
AC9W30	White	9
AC9Y30	Yellow	9
ACAW30	White	A
ACAY30	Yellow	A
ACBW30	White	B
ACBY30	Yellow	B
ACCW30	White	C
ACCY30	Yellow	C
ACDW30	White	D
ACDY30	Yellow	D
ACEW30	White	E
ACEY30	Yellow	E
ACFW30	White	F
ACFY30	Yellow	F
ACGW30	White	G
ACGY30	Yellow	G
ACHW30	White	H
ACHY30	Yellow	H
ACIW30	White	I
ACIY30	Yellow	I
ACJW30	White	J
ACJY30	Yellow	J

Order reference	Colour	Legend
ACKW30	White	K
ACKY30	Yellow	K
ACLW30	White	L
ACLY30	Yellow	L
ACMW30	White	M
ACMY30	Yellow	M
ACNW30	White	N
ACNY30	Yellow	N
ACPW30	White	P
ACPY30	Yellow	P
ACQW30	White	Q
ACQY30	Yellow	Q
ACRW30	White	R
ACRY30	Yellow	R
ACSW30	White	S
ACSY30	Yellow	S
ACTW30	White	T
ACTY30	Yellow	T
ACU130	White	U1
ACUW30	White	U
ACUY30	Yellow	U
ACV130	White	V1
ACW30	White	V
ACVY30	Yellow	V
ACW130	White	W1
ACWW30	White	W
ACWY30	Yellow	W
ACXW30	White	X
ACXY30	Yellow	X
ACYW30	White	Y
ACYY30	Yellow	Y
ACZW30	White	Z
ACZY30	Yellow	Z

## Numeric Ring Chain

Semi-cut, white with black marking, yellow with black marking upon request. Numbers, Letters, Symbols: + - / . = ~ Ground or coloured. International colour code.

- Internal diameter: 3.5mm
- Quantity: 1000
- M.O.Q: 2500
- Internal diameter 3.5mm



Order reference	Colour	Legend
AC0I35	Black	0
AC1I35	Brown	1
AC2I35	Red	Neutral
AC35NB	Brown	Neutral
AC35NG	Grey	Neutral
AC35NI	Purple	Neutral
AC35NL	Blue	Neutral
AC35NN	Black	Neutral
AC35NO	Orange	Neutral
AC35NR	Red	Neutral
AC35NV	Green	Neutral
AC35NW	White	Neutral
AC35NY	Yellow	Neutral
AC35WB	White	/
AC35WH	White	ground
AC35WM	White	-
AC35WP	White	+
AC35WT	White	.
AC35YB	Yellow	/
AC35YH	Yellow	ground
AC35YM	Yellow	-
AC35YP	Yellow	+

Order reference	Colour	Legend
AC35YT	Yellow	.
AC3I35	Orange	3
AC5I35	Green	5
AC6I35	Blue	6
AC7I35	Purple	7
AC8I35	Grey	8
ACHW35	White	H
ACHY35	Yellow	H
ACIW35	White	I
ACIY35	Yellow	I
ACJW35	White	J
ACJY35	Yellow	J
ACKW35	White	K
ACKY35	Yellow	K
ACLW35	White	L
ACLY35	Yellow	L
ACMW35	White	M
ACMY35	Yellow	M
ACNW35	White	N
ACNY35	Yellow	N
ACPW35	White	P
ACPY35	Yellow	P

Order reference	Colour	Legend
ACQW35	White	Q
ACQY35	Yellow	Q
ACRW35	White	R
ACRY35	Yellow	R
ACSW35	White	S
ACSY35	Yellow	S
ACTR35	Red	T
ACTW35	White	T
ACTY35	Yellow	T
ACUW35	White	U
ACUY35	Yellow	U
ACVW35	White	V
ACVY35	Yellow	V
ACWW35	White	W
ACWY35	Yellow	W
ACXW35	White	X
ACXY35	Yellow	X
ACYW35	White	Y
ACYY35	Yellow	Y
ACZW35	White	Z
ACZY35	Yellow	Z

## Numeric Ring Chain

Semi-cut, white with black marking, yellow with black marking upon request. Numbers, Letters, Symbols: + - / . = ~ Ground or coloured. International colour code.

- Internal diameter: 4.5mm
- Quantity: 1000
- M.O.Q: 2500
- Internal diameter 4.5mm



Order reference	Colour	Legend
AC0I45	Black	0
AC0W45	White	0
AC0Y45	Yellow	0
AC1I45	Brown	1
AC1W45	White	1
AC1Y45	Yellow	1
AC2I45	Red	Neutral
AC2W45	White	2
AC2Y45	Yellow	2
AC3I45	Orange	3
AC3W45	White	3
AC3Y45	Yellow	3
AC45NB	Brown	Neutral
AC45NG	Grey	Neutral
AC45NI	Purple	Neutral
AC45NL	Blue	Neutral
AC45NN	Black	Neutral
AC45NO	Orange	Neutral
AC45NR	Red	Neutral
AC45NV	Green	Neutral
AC45NW	White	Neutral
AC45NY	Yellow	Neutral
AC45WB	White	/
AC45WH	White	ground
AC45WM	White	-
AC45WP	White	+
AC45WT	White	.
AC45YB	Yellow	/
AC45YH	Yellow	ground
AC45YM	Yellow	-
AC45YP	Yellow	+
AC45YT	Yellow	.
AC4W45	White	4
AC4Y45	Yellow	4
AC5I45	Green	5

Order reference	Colour	Legend
AC5W45	White	5
AC5Y45	Yellow	5
AC6I45	Blue	6
AC6W45	White	6
AC6Y45	Yellow	6
AC7I45	Purple	7
AC7W45	White	7
AC7Y45	Yellow	7
AC8I45	Grey	8
AC8W45	White	8
AC8Y45	Yellow	8
AC9W45	White	9
AC9Y45	Yellow	9
ACAW45	White	A
ACAY45	Yellow	A
ACBW45	White	B
ACBY45	Yellow	B
ACCW45	White	C
ACCY45	Yellow	C
ACDW45	White	D
ACDY45	Yellow	D
ACEW45	White	E
ACEY45	Yellow	E
ACFW45	White	F
ACFY45	Yellow	F
ACGW45	White	G
ACGY45	Yellow	G
ACHW45	White	H
ACHY45	Yellow	H
ACIW45	White	I
ACIY45	Yellow	I
ACJW45	White	J
ACJY45	Yellow	J
ACKW45	White	K
ACKY45	Yellow	K

Order reference	Colour	Legend
ACLW45	White	L
ACLY45	Yellow	L
ACMW45	White	M
ACMY45	Yellow	M
ACNW45	White	N
ACNY45	Yellow	N
ACPW45	White	P
ACPY45	Yellow	P
ACQW45	White	Q
ACQY45	Yellow	Q
ACRW45	White	R
ACRY45	Yellow	R
ACSW45	White	S
ACSY45	Yellow	S
ACTW45	White	T
ACTY45	Yellow	T
ACUW45	White	U
ACUY45	Yellow	U
ACVW45	White	V
ACVY45	Yellow	V
ACWW45	White	W
ACWY45	Yellow	W
ACXW45	White	X
ACXY45	Yellow	X
ACYW45	White	Y
ACYY45	Yellow	Y
ACZW45	White	Z
ACZY45	Yellow	Z
ACXY30	Yellow	X
ACYW30	White	Y
ACYY30	Yellow	Y
ACZW30	White	Z
ACZY30	Yellow	Z

## Numeric Ring Chain

Semi-cut, white with black marking, yellow with black marking upon request. Numbers, Letters, Symbols: + - / . = ~ Ground or coloured. International colour code.

- Internal diameter: 6.0mm
- Quantity: 1000
- M.O.Q: 2000
- Internal diameter 6mm



Order reference	Colour	Legend
AC0I60	Black	0
AC0W60	White	0
AC0Y60	Yellow	0
AC1I60	Brown	1
AC1W60	White	1
AC1Y60	Yellow	1
AC2I60	Red	Neutral
AC2W60	White	2
AC2Y60	Yellow	2
AC3I60	Orange	3
AC3W60	White	3
AC3Y60	Yellow	3
AC4W60	White	4
AC4Y60	Yellow	4
AC5I60	Green	5
AC5W60	White	5
AC5Y60	Yellow	5
AC60NB	Brown	Neutral
AC60NG	Grey	Neutral
AC60NI	Purple	Neutral
AC60NL	Blue	Neutral
AC60NN	Black	Neutral
AC60NO	Orange	Neutral
AC60NR	Red	Neutral
AC60NV	Green	Neutral
AC60NW	White	Neutral
AC60NY	Yellow	Neutral
AC60WB	White	/
AC60WH	White	ground
AC60WM	White	-
AC60WP	White	+
AC60WT	White	.
AC60YB	Yellow	/
AC60YH	Yellow	ground
AC60YM	Yellow	-

Order reference	Colour	Legend
AC60YP	Yellow	+
AC60YT	Yellow	.
AC6I60	Blue	6
AC6W60	White	6
AC6Y60	Yellow	6
AC7I60	Purple	7
AC7W60	White	7
AC7Y60	Yellow	7
AC8I60	Grey	8
AC8W60	White	8
AC8Y60	Yellow	8
AC9W60	White	9
AC9Y60	Yellow	9
ACAW60	White	A
ACAY60	Yellow	A
ACBW60	White	B
ACBY60	Yellow	B
ACCW60	White	C
ACCY60	Yellow	C
ACDW60	White	D
ACDY60	Yellow	D
ACEW60	White	E
ACEY60	Yellow	E
ACFW60	White	F
ACFY60	Yellow	F
ACGW60	White	G
ACGY60	Yellow	G
ACHW60	White	H
ACHY60	Yellow	H
ACIW60	White	I
ACIY60	Yellow	I
ACJW60	White	J
ACJY60	Yellow	J
ACKW60	White	K
ACKY60	Yellow	K

Order reference	Colour	Legend
ACLW60	White	L
ACLY60	Yellow	L
ACMW60	White	M
ACMY60	Yellow	M
ACNW60	White	N
ACNY60	Yellow	N
ACPW60	White	P
ACPY60	Yellow	P
ACQW60	White	Q
ACQY60	Yellow	Q
ACRW60	White	R
ACRY60	Yellow	R
ACSW60	White	S
ACSY60	Yellow	S
ACTW60	White	T
ACTY60	Yellow	T
ACUW60	White	U
ACUY60	Yellow	U
ACVW60	White	V
ACVY60	Yellow	V
ACWW60	White	W
ACWY60	Yellow	W
ACXW60	White	X
ACXY60	Yellow	X
ACYW60	White	Y
ACYY60	Yellow	Y
ACZW60	White	Z
ACZY60	Yellow	Z
ACXY30	Yellow	X
ACYW30	White	Y
ACYY30	Yellow	Y
ACZW30	White	Z
ACZY30	Yellow	Z

# Manual Identification

## Index Rings - Spring rings - "Z" type Yellow Wire Markers

### INDEX RINGS

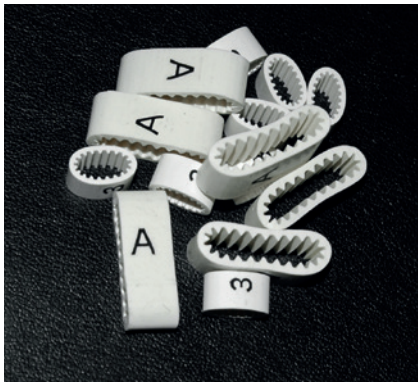
Modular. Inserted by hand. Indelible, do not dirty, do not come loose and do not rotate on the cable. White marked in black. Colours upon request.

Material: PVC.

Marked:

- numbers 0 to 9
- upper case letters
- conventional symbols: + - Ground.
- Quantity: 1000
- M.O.Q: 2000

Index Rings diam. available (mm): 2 and 2.5 - 3 and 3.5 - 4 and 4.5 - 5 and 5.5 - 6 - 7 - 8



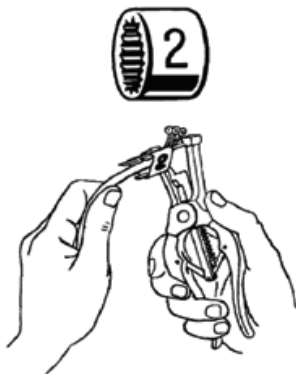
Order reference	Colour	Legend	Internal diameter (mm)
AIBB60	Blue	Neutral	6
AIBL80	Blue	Neutral	8
AILA20	White	A	2
AILA30	White	A	3
AILA60	White	A	6
AILA80	White	A	8
AILB20	White	B	2
AILB60	White	B	6
AILB80	White	B	8
AILC20	White	C	2
AILC30	White	C	3
AILC60	White	C	6
AILC80	White	C	8
AILD20	White	D	2
AILD30	White	D	3
AILD60	White	D	6
AILD80	White	D	8
AILE20	White	E	2
AILE80	White	E	8
AILF20	White	F	2
AILF30	White	F	3
AILF80	White	F	8
AILG20	White	G	2
AILG30	White	G	3
AILG80	White	G	8
AILH80	White	H	8
AILI30	White	I	3
AILI80	White	I	8
AILJ80	White	J	8
AILK80	White	K	8
AILL30	White	L	3
AILM30	White	M	3
AILM80	White	M	8
AILN30	White	N	3
AILN80	White	N	8
AILO30	White	O	3
AILP30	White	P	3
AILP60	White	P	6
AILP80	White	P	8
AILQ80	White	Q	8
AILR30	White	R	3
AILR80	White	R	8
AILS30	White	S	3
AILS80	White	S	8
AILT30	White	T	3
AILT80	White	T	8
AILU30	White	U	3
AILU80	White	U	8
AILV25	White	V	2.5
AILV60	White	V	6
AILV80	White	V	8
AILW80	White	W	8
AILX80	White	X	8
AILY80	White	Y	8
AILZ80	White	Z	8
AIN020	White	0	2
AIN025	White	0	2.5
AIN060	White	0	6
AIN070	White	0	7
AIN080	White	0	8
AIN120	White	1	2

Order reference	Colour	Legend	Internal diameter (mm)
AIN125	White	1	2.5
AIN130	White	1	3
AIN155	White	1	5.5
AIN160	White	1	6
AIN170	White	1	7
AIN180	White	1	8
AIN220	White	2	2
AIN225	White	2	2.5
AIN230	White	2	3
AIN255	White	2	5.5
AIN260	White	2	6
AIN270	White	2	7
AIN280	White	2	8
AIN320	White	3	2
AIN325	White	3	2.5
AIN330	White	3	3
AIN360	White	3	6
AIN370	White	3	7
AIN380	White	3	8
AIN420	White	4	2
AIN425	White	4	2.5
AIN430	White	4	3
AIN455	White	4	5.5
AIN460	White	4	6
AIN470	White	4	7
AIN480	White	4	8
AIN520	White	5	2
AIN525	White	5	2.5
AIN530	White	5	3
AIN555	White	5	5.5
AIN560	White	5	6
AIN570	White	5	7
AIN580	White	5	8
AIN620	White	6	2
AIN625	White	6	2.5
AIN630	White	6	3
AIN655	White	6	5.5
AIN660	White	6	6
AIN670	White	6	7
AIN680	White	6	8
AIN720	White	7	2
AIN725	White	7	2.5
AIN730	White	7	3
AIN755	White	7	5.5
AIN760	White	7	6
AIN770	White	7	7
AIN780	White	7	8
AIN820	White	8	2
AIN825	White	8	2.5
AIN830	White	8	3
AIN855	White	8	5.5
AIN860	White	8	6
AIN870	White	8	7
AIN880	White	8	8
AIN920	White	9	2
AIN925	White	9	2.5
AIN930	White	9	3
AIN955	White	9	5.5
AIN960	White	9	6
AIN970	White	9	7
AIN980	White	9	8



## SPRING RINGS

The elasticity of the material allows the mounting of "Spring Rings" on wires of various diameters. Assembly is carried out by hand with the special pliers.



Material: Black elastic PVC. Marks: numbers 0 to 9, upper case letters, conventional symbols: + - Ground. Flat nose pliers: Type G

Minimum: 2,000 rings per diameter and marking

- Quantity: 1000
- M.O.Q: 2000

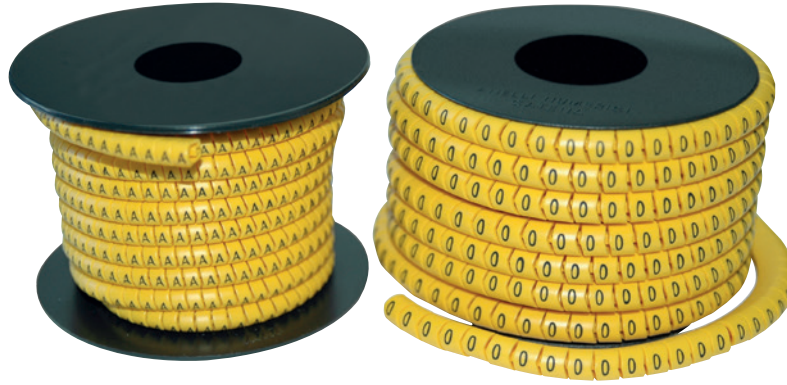
Index Ring	Pack Per Box
Width 4 mm - from diam. 2 to diam. 5.5 mm	1,000 pieces up to diam. 4.5 mm
Width 6 mm - from diam. 5 to diam. 8 mm	500 pieces up to diam. 6 mm

Spring Rings diam. available (mm): 9 – 11 – 13 – 15 – 18 – 20

Order reference	Legend	Internal diameter (mm)	For wires diam min/ max (mm)
AELA09	A	9	6-9
AELA11	A	11	8-11
AELA13	A	13	8-13
AELB09	B	9	6-9
AELB11	B	11	8-11
AELB13	B	13	8-13
AELC09	C	9	6-9
AELC11	C	11	8-11
AELD09	C	9	6-9
AELD11	D	11	8-11
AELN13	N	13	8-13
AELR09	R	9	6-9
AELU15	U	15	8-15
AELV09	V	9	6-9
AELV15	V	15	8-15
AELW09	W	9	6-9
AELW15	W	15	8-15
AEN009	0	9	6-9
AEN011	0	11	8-11
AEN013	0	13	8-13
AEN109	1	9	6-9
AEN111	1	11	8-11
AEN113	1	13	8-13
AEN115	1	15	8-15
AEN118	1	18	10-18
AEN209	2	9	6-9
AEN211	2	11	8-11

Order reference	Legend	Internal diameter (mm)	For wires diam min/ max (mm)
AEN213	2	13	8-13
AEN215	2	15	8-15
AEN218	2	18	10-18
AEN309	3		
AEN311	3		
AEN313	3		
AEN318	3		
AEN409	4	9	6-9
AEN411	4	11	8-11
AEN413	4	13	8-13
AEN418	4	18	10-18
AEN509	5	9	6-9
AEN511	5	11	8-11
AEN513	5	13	8-13
AEN609	6	9	6-9
AEN611	6	11	8-11
AEN613	6	13	8-13
AEN709	7	9	6-9
AEN711	7	11	8-11
AEN713	7	13	8-13
AEN809	8	9	6-9
AEN811	8	11	8-11
AEN813	8	13	8-13
AEN909	9	9	6-9
AEN911	9	11	8-11
AEN913	9	13	8-13

SPRING RING	Pack Per Box
Width 6 mm - to diam. 9 mm	1,000 pieces up to diam. 13 mm
Width 8 mm - from diam. 11 to diam. 15 mm	500 pieces up to diam. 20 mm
Width 10 mm - from diam. 18 to diam. 20 mm	

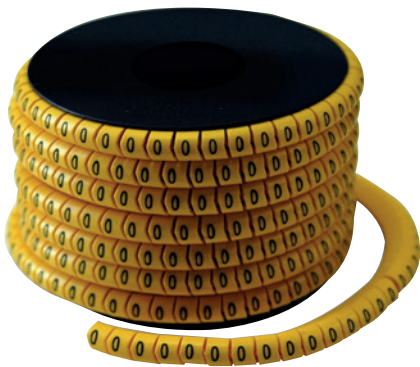


## “Z” TYPE YELLOW WIRE MARKERS

Yellow wire marker rings in flexible PVC. With a special shape, so each rings size can adapt to various diameter wires. Cut in a Z shape to fit between each other, aligning the text. Material: Flexible yellow PVC.

Marks:

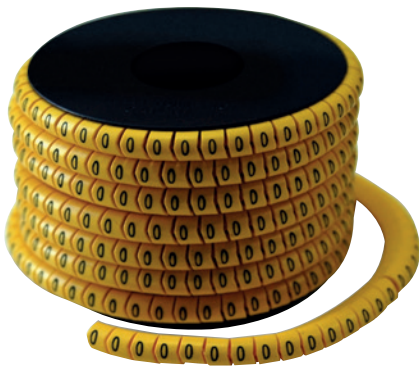
- Numbers 0 to 9
- Letters A to Z,
- Symbols + - Ground.
- Pack: spools.
- Quantity: 1000
- M.O.Q: 2000



Order reference	Colour	Legend	Mod	For wires diam min/max (mm)
MZ0GLA	Yellow	A	0	1.8-2.7
MZ0GLB	Yellow	B	0	1.8-2.7
MZ0GLC	Yellow	C	0	1.8-2.7
MZ0GLD	Yellow	D	0	1.8-2.7
MZ0GLE	Yellow	E	0	1.8-2.7
MZ0GLF	Yellow	F	0	1.8-2.7
MZ0GLG	Yellow	G	0	1.8-2.7
MZ0GLH	Yellow	H	0	1.8-2.7
MZ0GLI	Yellow	I	0	1.8-2.7
MZ0GLJ	Yellow	J	0	1.8-2.7
MZ0GLK	Yellow	K	0	1.8-2.7
MZ0GLL	Yellow	L	0	1.8-2.7
MZ0GLM	Yellow	M	0	1.8-2.7
MZ0GLN	Yellow	N	0	1.8-2.7
MZ0GLO	Yellow	O	0	1.8-2.7
MZ0GLP	Yellow	P	0	1.8-2.7
MZ0GLQ	Yellow	Q	0	1.8-2.7
MZ0GLR	Yellow	R	0	1.8-2.7
MZ0GLS	Yellow	S	0	1.8-2.7
MZ0GLT	Yellow	T	0	1.8-2.7
MZ0GLU	Yellow	U	0	1.8-2.7
MZ0GLV	Yellow	V	0	1.8-2.7
MZ0GLW	Yellow	W	0	1.8-2.7
MZ0GLX	Yellow	X	0	1.8-2.7
MZ0GLY	Yellow	Y	0	1.8-2.7
MZ0GLZ	Yellow	Z	0	1.8-2.7
MZ0GN0	Yellow	0	0	1.8-2.7
MZ0GN1	Yellow	1	0	1.8-2.7
MZ0GN2	Yellow	2	0	1.8-2.7
MZ0GN3	Yellow	3	0	1.8-2.7
MZ0GN4	Yellow	4	0	1.8-2.7
MZ0GN5	Yellow	5	0	1.8-2.7
MZ0GN6	Yellow	6	0	1.8-2.7
MZ0GN7	Yellow	7	0	1.8-2.7
MZ0GN8	Yellow	8	0	1.8-2.7
MZ0GN9	Yellow	9	0	1.8-2.7
MZ0GSB	Yellow	/	0	1.8-2.7
MZ0GSH	Yellow	ground	0	1.8-2.7
MZ0GSM	Yellow	-	0	1.8-2.7
MZ0GSP	Yellow	+	0	1.8-2.7
MZ1GLA	Yellow	A	1	2.2-3.5
MZ1GLB	Yellow	B	1	2.2-3.5
MZ1GLC	Yellow	C	1	2.2-3.5
MZ1GLD	Yellow	D	1	2.2-3.5
MZ1GLE	Yellow	E	1	2.2-3.5
MZ1GLF	Yellow	F	1	2.2-3.5
MZ1GLG	Yellow	G	1	2.2-3.5
MZ1GLH	Yellow	H	1	2.2-3.5
MZ1GLI	Yellow	I	1	2.2-3.5
MZ1GLJ	Yellow	J	1	2.2-3.5
MZ1GLK	Yellow	K	1	2.2-3.5
MZ1GLL	Yellow	L	1	2.2-3.5

Order reference	Colour	Legend	Mod	For wires diam min/max (mm)
MZ1GLM	Yellow	M	1	2.2-3.5
MZ1GLN	Yellow	N	1	2.2-3.5
MZ1GLO	Yellow	O	1	2.2-3.5
MZ1GLP	Yellow	P	1	2.2-3.5
MZ1GLQ	Yellow	Q	1	2.2-3.5
MZ1GLR	Yellow	R	1	2.2-3.5
MZ1GLS	Yellow	S	1	2.2-3.5
MZ1GLT	Yellow	T	1	2.2-3.5
MZ1GLU	Yellow	U	1	2.2-3.5
MZ1GLV	Yellow	V	1	2.2-3.5
MZ1GLW	Yellow	W	1	2.2-3.5
MZ1GLX	Yellow	X	1	2.2-3.5
MZ1GLY	Yellow	Y	1	2.2-3.5
MZ1GLZ	Yellow	Z	1	2.2-3.5
MZ1GN0	Yellow	0	1	2.2-3.5
MZ1GN1	Yellow	1	1	2.2-3.5
MZ1GN2	Yellow	2	1	2.2-3.5
MZ1GN3	Yellow	3	1	2.2-3.5
MZ1GN4	Yellow	4	1	2.2-3.5
MZ1GN5	Yellow	5	1	2.2-3.5
MZ1GN6	Yellow	6	1	2.2-3.5
MZ1GN7	Yellow	7	1	2.2-3.5
MZ1GN8	Yellow	8	1	2.2-3.5
MZ1GN9	Yellow	9	1	2.2-3.5
MZ1GSB	Yellow	/	1	2.2-3.5
MZ1GSH	Yellow	ground	1	2.2-3.5
MZ1GSM	Yellow	-	1	2.2-3.5
MZ1GSP	Yellow	+	1	2.2-3.5
MZ2GLA	Yellow	A	2	2.5-4.1
MZ2GLB	Yellow	B	2	2.5-4.1
MZ2GLC	Yellow	C	2	2.5-4.1
MZ2GLD	Yellow	D	2	2.5-4.1
MZ2GLE	Yellow	E	2	2.5-4.1
MZ2GLF	Yellow	F	2	2.5-4.1
MZ2GLG	Yellow	G	2	2.5-4.1
MZ2GLH	Yellow	H	2	2.5-4.1
MZ2GLI	Yellow	I	2	2.5-4.1
MZ2GLJ	Yellow	J	2	2.5-4.1
MZ2GLK	Yellow	K	2	2.5-4.1
MZ2GLL	Yellow	L	2	2.5-4.1
MZ2GLM	Yellow	M	2	2.5-4.1
MZ2GLN	Yellow	N	2	2.5-4.1
MZ2GLO	Yellow	O	2	2.5-4.1
MZ2GLP	Yellow	P	2	2.5-4.1
MZ2GLQ	Yellow	Q	2	2.5-4.1
MZ2GLR	Yellow	R	2	2.5-4.1
MZ2GLS	Yellow	S	2	2.5-4.1
MZ2GLT	Yellow	T	2	2.5-4.1
MZ2GLU	Yellow	U	2	2.5-4.1
MZ2GLV	Yellow	V	2	2.5-4.1
MZ2GLW	Yellow	W	2	2.5-4.1
MZ2GLX	Yellow	X	2	2.5-4.1



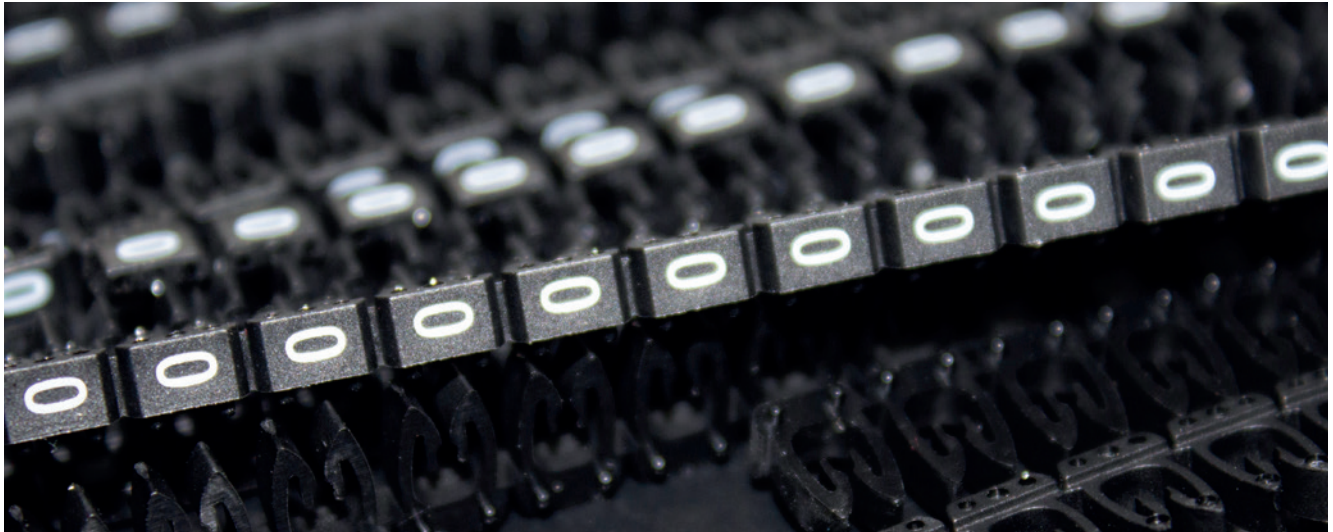


Order reference	Colour	Legend	Mod	For wires diam min/max (mm)
MZ2GLY	Yellow	Y	2	2.5-4.1
MZ2GLZ	Yellow	Z	2	2.5-4.1
MZ2GN0	Yellow	0	2	2.5-4.1
MZ2GN1	Yellow	1	2	2.5-4.1
MZ2GN2	Yellow	2	2	2.5-4.1
MZ2GN3	Yellow	3	2	2.5-4.1
MZ2GN4	Yellow	4	2	2.5-4.1
MZ2GN5	Yellow	5	2	2.5-4.1
MZ2GN6	Yellow	6	2	2.5-4.1
MZ2GN7	Yellow	7	2	2.5-4.1
MZ2GN8	Yellow	8	2	2.5-4.1
MZ2GN9	Yellow	9	2	2.5-4.1
MZ2GSB	Yellow	/	2	2.5-4.1
MZ2GSH	Yellow	ground	2	2.5-4.1
MZ2GSM	Yellow	-	2	2.5-4.1
MZ2GSP	Yellow	+	2	2.5-4.1
MZ3GLA	Yellow	A	3	3.2-5
MZ3GLB	Yellow	B	3	3.2-5
MZ3GLC	Yellow	C	3	3.2-5
MZ3GLD	Yellow	D	3	3.2-5
MZ3GLE	Yellow	E	3	3.2-5
MZ3GLF	Yellow	F	3	3.2-5
MZ3GLG	Yellow	G	3	3.2-5
MZ3GLH	Yellow	H	3	3.2-5
MZ3GLI	Yellow	I	3	3.2-5
MZ3GLJ	Yellow	J	3	3.2-5
MZ3GLK	Yellow	K	3	3.2-5
MZ3GLL	Yellow	L	3	3.2-5
MZ3GLM	Yellow	M	3	3.2-5
MZ3GLN	Yellow	N	3	3.2-5
MZ3GLO	Yellow	O	3	3.2-5
MZ3GLP	Yellow	P	3	3.2-5
MZ3GLQ	Yellow	Q	3	3.2-5
MZ3GLR	Yellow	R	3	3.2-5
MZ3GLS	Yellow	S	3	3.2-5
MZ3GLT	Yellow	T	3	3.2-5
MZ3GLU	Yellow	U	3	3.2-5
MZ3GLV	Yellow	V	3	3.2-5
MZ3GLW	Yellow	W	3	3.2-5
MZ3GLX	Yellow	X	3	3.2-5
MZ3GLY	Yellow	Y	3	3.2-5
MZ3GLZ	Yellow	Z	3	3.2-5
MZ3GN0	Yellow	0	3	3.2-5
MZ3GN1	Yellow	1	3	3.2-5
MZ3GN2	Yellow	2	3	3.2-5
MZ3GN3	Yellow	3	3	3.2-5
MZ3GN4	Yellow	4	3	3.2-5
MZ3GN5	Yellow	5	3	3.2-5
MZ3GN6	Yellow	6	3	3.2-5
MZ3GN7	Yellow	7	3	3.2-5
MZ3GN8	Yellow	8	3	3.2-5
MZ3GN9	Yellow	9	3	3.2-5
MZ3GSB	Yellow	/	3	3.2-5
MZ3GSH	Yellow	ground	3	3.2-5
MZ3GSM	Yellow	-	3	3.2-5
MZ3GSP	Yellow	+	3	3.2-5
MZ4GLA	Yellow	A	4	4.3-7
MZ4GLB	Yellow	B	4	4.3-7
MZ4GLC	Yellow	C	4	4.3-7
MZ4GLD	Yellow	D	4	4.3-7
MZ4GLE	Yellow	E	4	4.3-7
MZ4GLF	Yellow	F	4	4.3-7
MZ4GLG	Yellow	G	4	4.3-7
MZ4GLH	Yellow	H	4	4.3-7
MZ4GLI	Yellow	I	4	4.3-7
MZ4GLJ	Yellow	J	4	4.3-7
MZ4GLK	Yellow	K	4	4.3-7
MZ4GLL	Yellow	L	4	4.3-7

Order reference	Colour	Legend	Mod	For wires diam min/max (mm)
MZ4GLM	Yellow	M	4	4.3-7
MZ4GLN	Yellow	N	4	4.3-7
MZ4GLO	Yellow	O	4	4.3-7
MZ4GLP	Yellow	P	4	4.3-7
MZ4GLQ	Yellow	Q	4	4.3-7
MZ4GLR	Yellow	R	4	4.3-7
MZ4GLS	Yellow	S	4	4.3-7
MZ4GLT	Yellow	T	4	4.3-7
MZ4GLU	Yellow	U	4	4.3-7
MZ4GLV	Yellow	V	4	4.3-7
MZ4GLW	Yellow	W	4	4.3-7
MZ4GLX	Yellow	X	4	4.3-7
MZ4GLY	Yellow	Y	4	4.3-7
MZ4GLZ	Yellow	Z	4	4.3-7
MZ4GN0	Yellow	0	4	4.3-7
MZ4GN1	Yellow	1	4	4.3-7
MZ4GN2	Yellow	2	4	4.3-7
MZ4GN3	Yellow	3	4	4.3-7
MZ4GN4	Yellow	4	4	4.3-7
MZ4GN5	Yellow	5	4	4.3-7
MZ4GN6	Yellow	6	4	4.3-7
MZ4GN7	Yellow	7	4	4.3-7
MZ4GN8	Yellow	8	4	4.3-7
MZ4GN9	Yellow	9	4	4.3-7
MZ4GSB	Yellow	/	4	4.3-7
MZ4GSH	Yellow	ground	4	4.3-7
MZ4GSM	Yellow	-	4	4.3-7
MZ4GSP	Yellow	+	4	4.3-7
MZ5GLA	Yellow	A	5	6.8-12
MZ5GLB	Yellow	B	5	6.8-12
MZ5GLC	Yellow	C	5	6.8-12
MZ5GLD	Yellow	D	5	6.8-12
MZ5GLE	Yellow	E	5	6.8-12
MZ5GLF	Yellow	F	5	6.8-12
MZ5GLG	Yellow	G	5	6.8-12
MZ5GLH	Yellow	H	5	6.8-12
MZ5GLI	Yellow	I	5	6.8-12
MZ5GLJ	Yellow	J	5	6.8-12
MZ5GLK	Yellow	K	5	6.8-12
MZ5GLL	Yellow	L	5	6.8-12
MZ5GLM	Yellow	M	5	6.8-12
MZ5GLN	Yellow	N	5	6.8-12
MZ5GLO	Yellow	O	5	6.8-12
MZ5GLP	Yellow	P	5	6.8-12
MZ5GLQ	Yellow	Q	5	6.8-12
MZ5GLR	Yellow	R	5	6.8-12
MZ5GLS	Yellow	S	5	6.8-12
MZ5GLT	Yellow	T	5	6.8-12
MZ5GLU	Yellow	U	5	6.8-12
MZ5GLV	Yellow	V	5	6.8-12
MZ5GLW	Yellow	W	5	6.8-12
MZ5GLX	Yellow	X	5	6.8-12
MZ5GLY	Yellow	Y	5	6.8-12
MZ5GLZ	Yellow	Z	5	6.8-12
MZ5GN0	Yellow	0	5	6.8-12
MZ5GN1	Yellow	1	5	6.8-12
MZ5GN2	Yellow	2	5	6.8-12
MZ5GN3	Yellow	3	5	6.8-12
MZ5GN4	Yellow	4	5	6.8-12
MZ5GN5	Yellow	5	5	6.8-12
MZ5GN6	Yellow	6	5	6.8-12
MZ5GN7	Yellow	7	5	6.8-12
MZ5GN8	Yellow	8	5	6.8-12
MZ5GN9	Yellow	9	5	6.8-12
MZ5GSB	Yellow	/	5	6.8-12
MZ5GSH	Yellow	ground	5	6.8-12
MZ5GSM	Yellow	-	5	6.8-12
MZ5GSP	Yellow	+	5	6.8-12

# Manual Identification

## Open Wire Marking rings- MOD3



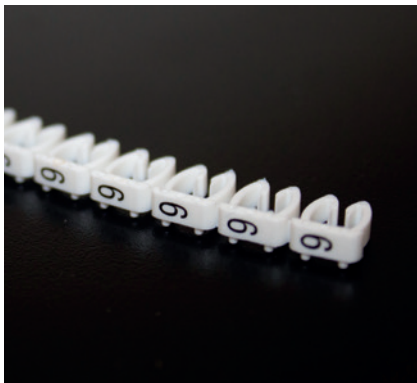
### OPEN WIRE MARKING RINGS

Can be mounted on already connected wires and cables

Material: Polyamide 6.6

Temperature: from -30°C to +70°C

- Quantity: 1000
- M.O.Q: 500



	Type D1	Type D2	Type D3	QTY/BOX
wire section mm2	0,5-1,5	1,5 - 2,5	4 - 6	500 pc for numbers
				200 pc for letters and symbols

Order reference	Description EN	Colour	Legend	Wire section mm <sup>2</sup>
WC0ID1	Serie MOD3 D1	White	0	0,5-1,5
WC0ID2	Serie MOD3 D2	White	0	1,5-2,5
WC0ID3	Serie MOD3 D3	White	0	4-6
WC1ID1	Serie MOD3 D1	Brown	1	0,5-1,5
WC1ID2	Serie MOD3 D2	Brown	1	1,5-2,5
WC1ID3	Serie MOD3 D3	Brown	1	4-6
WC2ID1	Serie MOD3 D1	Red	2	0,5-1,5
WC2ID2	Serie MOD3 D2	Red	2	1,5-2,5
WC2ID3	Serie MOD3 D3	Red	2	4-6
WC3ID1	Serie MOD3 D1	Yellow	3	0,5-1,5
WC3ID2	Serie MOD3 D2	Yellow	3	1,5-2,5
WC3ID3	Serie MOD3 D3	Yellow	3	4-6
WC4ID1	Serie MOD3 D1	Orange	4	0,5-1,5
WC4ID2	Serie MOD3 D2	Orange	4	1,5-2,5
WC4ID3	Serie MOD3 D3	Orange	4	4-6
WC5ID1	Serie MOD3 D1	Green	5	0,5-1,5
WC5ID2	Serie MOD3 D2	Green	5	1,5-2,5
WC5ID3	Serie MOD3 D3	Green	5	4-6
WC6ID1	Serie MOD3 D1	Purple	6	0,5-1,5
WC6ID2	Serie MOD3 D2	Purple	6	1,5-2,5
WC6ID3	Serie MOD3 D3	Purple	6	4-6
WC7ID1	Serie MOD3 D1	Blue	7	0,5-1,5
WC7ID2	Serie MOD3 D2	Blue	7	1,5-2,5
WC7ID3	Serie MOD3 D3	Blue	7	4-6
WC8ID1	Serie MOD3 D1	Grey	8	0,5-1,5
WC8ID2	Serie MOD3 D2	Grey	8	1,5-2,5
WC8ID3	Serie MOD3 D3	Grey	8	4-6
WC9ID1	Serie MOD3 D1	White	9	0,5-1,5
WC9ID2	Serie MOD3 D2	White	9	1,5-2,5
WC9ID3	Serie MOD3 D3	White	9	4-6

## OPEN WIRE MARKING RINGS

Can be mounted on already connected wires and cables

Material: Polyamide 6.6

Temperature: from -30°C to +70°C

- Quantity: 1000
- M.O.Q: 200



Order reference	Description EN	Legend	Wire section mm <sup>2</sup>
WCLAD1	Serie MOD3 D1	A	0.5-1.5
WCLAD2	Serie MOD3 D2	A	1.5-2.5
WCLAD3	Serie MOD3 D3	A	4-6
WCLBD1	Serie MOD3 D1	B	0.5-1.5
WCLBD2	Serie MOD3 D2	B	1.5-2.5
WCLBD3	Serie MOD3 D3	B	4-6
WCLCD1	Serie MOD3 D1	C	0.5-1.5
WCLCD2	Serie MOD3 D2	C	1.5-2.5
WCLCD3	Serie MOD3 D3	C	4-6
WCLDD1	Serie MOD3 D1	D	0.5-1.5
WCLDD2	Serie MOD3 D2	D	1.5-2.5
WCLDD3	Serie MOD3 D3	D	4-6
WCLEDD1	Serie MOD3 D1	E	0.5-1.5
WCLEDD2	Serie MOD3 D2	E	1.5-2.5
WCLEDD3	Serie MOD3 D3	E	4-6
WCLFD1	Serie MOD3 D1	F	0.5-1.5
WCLFD2	Serie MOD3 D2	F	1.5-2.5
WCLFD3	Serie MOD3 D3	F	4-6
WCLGD1	Serie MOD3 D1	G	0.5-1.5
WCLGD2	Serie MOD3 D2	G	1.5-2.5
WCLGD3	Serie MOD3 D3	G	4-6
WCLHD1	Serie MOD3 D1	H	0.5-1.5
WCLHD2	Serie MOD3 D2	H	1.5-2.5
WCLHD3	Serie MOD3 D3	H	4-6
WCLID1	Serie MOD3 D1	I	0.5-1.5
WCLID2	Serie MOD3 D2	I	1.5-2.5
WCLID3	Serie MOD3 D3	I	4-6
WCLJD1	Serie MOD3 D1	J	0.5-1.5
WCLJD2	Serie MOD3 D2	J	1.5-2.5
WCLJD3	Serie MOD3 D3	J	4-6
WCLKD1	Serie MOD3 D1	K	0.5-1.5
WCLKD2	Serie MOD3 D2	K	1.5-2.5
WCLKD3	Serie MOD3 D3	K	4-6
WCLLD1	Serie MOD3 D1	L	0.5-1.5
WCLLD2	Serie MOD3 D2	L	1.5-2.5
WCLLD3	Serie MOD3 D3	L	4-6
WCLMD1	Serie MOD3 D1	M	0.5-1.5
WCLMD2	Serie MOD3 D2	M	1.5-2.5
WCLMD3	Serie MOD3 D3	M	4-6

Order reference	Description EN	Legend	Wire section mm <sup>2</sup>
WCLND1	Serie MOD3 D1	N	0.5-1.5
WCLND2	Serie MOD3 D2	N	1.5-2.5
WCLND3	Serie MOD3 D3	N	4-6
WCLOD1	Serie MOD3 D1	O	0.5-1.5
WCLOD2	Serie MOD3 D2	O	1.5-2.5
WCLOD3	Serie MOD3 D3	O	4-6
WCLPD1	Serie MOD3 D1	P	0.5-1.5
WCLPD2	Serie MOD3 D2	P	1.5-2.5
WCLPD3	Serie MOD3 D3	P	4-6
WCLQD1	Serie MOD3 D1	Q	0.5-1.5
WCLQD2	Serie MOD3 D2	Q	1.5-2.5
WCLQD3	Serie MOD3 D3	Q	4-6
WCLRD1	Serie MOD3 D1	R	0.5-1.5
WCLRD2	Serie MOD3 D2	R	1.5-2.5
WCLRD3	Serie MOD3 D3	R	4-6
WCLSD1	Serie MOD3 D1	S	0.5-1.5
WCLSD2	Serie MOD3 D2	S	1.5-2.5
WCLSD3	Serie MOD3 D3	S	4-6
WCLTD1	Serie MOD3 D1	T	0.5-1.5
WCLTD2	Serie MOD3 D2	T	1.5-2.5
WCLTD3	Serie MOD3 D3	T	4-6
WCLUD1	Serie MOD3 D1	U	0.5-1.5
WCLUD2	Serie MOD3 D2	U	1.5-2.5
WCLUD3	Serie MOD3 D3	U	4-6
WCLVD1	Serie MOD3 D1	V	0.5-1.5
WCLVD2	Serie MOD3 D2	V	1.5-2.5
WCLVD3	Serie MOD3 D3	V	4-6
WCLWD1	Serie MOD3 D1	W	0.5-1.5
WCLWD2	Serie MOD3 D2	W	1.5-2.5
WCLWD3	Serie MOD3 D3	W	4-6
WCLXD1	Serie MOD3 D1	X	0.5-1.5
WCLXD2	Serie MOD3 D2	X	1.5-2.5
WCLXD3	Serie MOD3 D3	X	4-6
WCLYD1	Serie MOD3 D1	Y	0.5-1.5
WCLYD2	Serie MOD3 D2	Y	1.5-2.5
WCLYD3	Serie MOD3 D3	Y	4-6
WCLZD1	Serie MOD3 D1	Z	0.5-1.5
WCLZD2	Serie MOD3 D2	Z	1.5-2.5
WCLZD3	Serie MOD3 D3	Z	4-6

Order reference	Legend
WCMPD1	Mp
WCMPD2	Mp
WCMPD3	Mp
WCSAD1	(
WCSAD2	(
WCSAD3	(
WCSBD1	/
WCSBD2	/
WCSBD3	/
WCSFD1	.
WCSFD2	.

Order reference	Legend
WCSFD3	.
WCSGD1	*
WCSGD2	*
WCSGD3	*
WCSMD1	-
WCSMD2	-
WCSMD3	-
WCSPD1	+
WCSPD2	+
WCSPD3	+

# Manual Identification

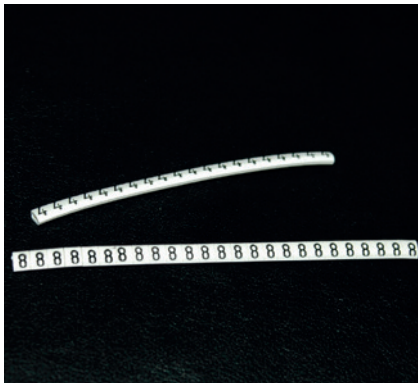
## Unimark wire marking Neoprene sleeves

### Unimark wire marking

Oval rings, semi-cut wrapped on a spool. White with black marking. Yellow with black marking. Coloured: white, red, green, black, yellow, blue, brown, pink, gray, orange and purple.

Numbers 0-9, Letters A -Z, Symbols + - / . = ~ Ground Double numbers: 10 - 99 (length mm 6) Numbers and abbreviations of 3,4,5 numbers (length mm 15)

- Quantity: 1000
- M.O.Q: 1000



► **To be used with Ademark Sleeves from page 4 to page 9**

### Unimark Tool

Dim. cm. 2.5 x 12.5 with plastic handle for composing marks and inserting them into sleeves. Unimark Hook To remove marking in the event of modifications.



Order reference	Colour	Legend
SUCW00	White	0
SUCW01	White	1
SUCW02	White	2
SUCW03	White	3
SUCW04	White	4
SUCW05	White	5
SUCW06	White	6
SUCW07	White	7
SUCW08	White	8
SUCW09	White	9
SUCWLA	White	A
SUCWLB	White	B
SUCWLC	White	C
SUCWLD	White	D
SUCWLE	White	E
SUCWLF	White	F
SUCWLG	White	G
SUCWLH	White	H
SUCWLI	White	I
SUCWLJ	White	J
SUCWLK	White	K
SUCWLL	White	L
SUCWLM	White	M
SUCWLN	White	N
SUCWLP	White	P
SUCWLQ	White	Q
SUCWLR	White	R
SUCWLS	White	S
SUCWLT	White	T
SUCWLU	White	U
SUCWLV	White	V
SUCWLW	White	W
SUCWLX	White	X
SUCWLY	White	Y
SUCWLZ	White	Z
SUCWSB	White	/
SUCWSH	White	ground
SUCWSM	White	-
SUCWSP	White	+
SUCWST	White	.
SUCWSX	(vide)	*
SUCWWW	White	Neutral

Order reference	Colour	Legend
SUCBBB	Brown	Neutral
SUCGGG	Grey	Neutral
SUCIII	Purple	Neutral
SUCLLL	Blue	Neutral
SUCNNN	Black	Neutral
SUCOOO	Orange	Neutral
SUCRRR	Red	Neutral
SUCVVV	Green	Neutral
SUCY00	Yellow	0
SUCY01	Yellow	1
SUCY02	Yellow	2
SUCY03	Yellow	3
SUCY04	Yellow	4
SUCY05	Yellow	5
SUCY06	Yellow	6
SUCY07	Yellow	7
SUCY08	Yellow	8
SUCY09	Yellow	9
SUCYLA	Yellow	A
SUCYLB	Yellow	B
SUCYLC	Yellow	C
SUCYLD	Yellow	D
SUCYLE	Yellow	E
SUCYLF	Yellow	F
SUCYLG	Yellow	G
SUCYLH	Yellow	H
SUCYLI	Yellow	I
SUCYLJ	Yellow	J
SUCYLK	Yellow	K
SUCYLL	Yellow	L
SUCYLM	Yellow	M
SUCYLN	Yellow	N
SUCYLP	Yellow	P
SUCYLQ	Yellow	Q
SUCYLR	Yellow	R
SUCYLS	Yellow	S
SUCYLT	Yellow	T
SUCYLU	Yellow	U
SUCYLV	Yellow	V
SUCYLW	Yellow	W
SUCYLX	Yellow	X
SUCYLY	Yellow	Y
SUCYLZ	Yellow	Z
SUCYSB	Yellow	/
SUCYSH	Yellow	ground
SUCYSM	Yellow	-
SUCYSP	Yellow	+
SUCYST	Yellow	.
SUCYYY	Yellow	(vide)

# Manual Identification

## Neoprene sleeves



### Neoprene Sleeves

Elastic Black Neoprene Sleeves for insulation and protection. Assembled with special flat nose pliers that expand the sleeve prior to assembly. Black. (Standard)

- Quantity: 1000



Order reference	Internal diameter (mm)	Wall thickness	M.O.Q.
MNT010	(vide)	(vide)	1000
MNTB05	(vide)	(vide)	500
MNTG05	(vide)	(vide)	500
MNTI00	1.25x20	0.5	1000
MNTI01	1.75x20	0.5	1000
MNTI02	3x25	0.6	1000
MNTI03	5x25	0.7	1000
MNTI04	7.50x30	0.8	1000
MNTI05	10x35	1	500
MNTI08	12x50	1	500
MNTI09	14x50	1	500
MNTI10	17x50	1	500
MNTI1B	2.5x20	0.5	1000
MNTR05	10x35	1	500

\*Coloured: (upon request only) white, red, green, brown, purple, orange, yellow, gray, blue.  
Lengths and printing upon customer request.

### 3 NOSE PLIERS

To expand rings and elastic sleeves.



DESCRIPTION	CODE	Quantity
Type KS for type 0 - 1 - 1 bis (2 noses)	MNPITS	1
Type KD for type 1 - 2 - 3	MNPITD	1
Type KK for type 2 - 3 - 4 - 5	MNPITK	1
Type KG for type 5 - 8 - 9 - 10	MNPITG	1

# Manual Identification

## ID Tags - MI-100 - Tags for Cable ties



### ID TAGS

PVC tags for cable ties, writable with pen. Printed on 2 sides, available in Italian and English.

Dimensions mm 100 x 40

Packs of 50 pieces

Order reference	Description EN	Width (mm)	Quantity	M.O.Q
SA4074	Marker for plastic	(vide)	1	1
TIDENT	In white plastic for the identification of conductors - writeable	40	100	50

*\*\*On order. Minimum 3500 pieces*

### TAGS FOR CABLE TIES

Writeable tags in plastic. Used for various identification needs.

To be used with cable ties max width 4.8 mm.

- Quantity: 1000
- M.O.Q: 1000

Order reference	Description	Width (mm)	Holes
TI2616		16	2
TI4020		20	6
TI6025		25	4
TI6050		50	4





**Africa**

Randburg, South Africa  
 Tel.: +27 11 704 3295  
 Email: africa@bradycorp.com

**Benelux**

Zele, Belgium  
 Tel.: +32 (0) 52 45 78 11  
 Email: benelux@bradycorp.com

**Central & Eastern Europe**

Bratislava, Slovakia  
 Tel.: +421 2 3300 4800  
 Email: central\_europe@bradycorp.com

**Denmark**

Odense  
 Tel.: +45 66 14 44 00  
 Email: denmark@bradycorp.com

**France**

Roncq  
 Tel.: +33 (0) 3 20 76 94 48  
 Email: france@bradycorp.com

**Germany, Austria & Switzerland**

Egelsbach, Germany  
 Tel.: +49 (0) 6103 7598 660  
 Email: germany@bradycorp.com

**Hungary**

Budaörs  
 Tel.: +36 23 500 275  
 Email: central\_europe@bradycorp.com

**Italy**

Gorgonzola  
 Tel.: +39 02 26 00 00 22  
 Email: italy@bradycorp.com

**Middle East FZE**

Dubai, UAE  
 Tel.: +971 4881 2524  
 Email: me@bradycorp.com

**Norway**

Kjeller  
 Tel.: +47 70 13 40 00  
 Email: norway@bradycorp.com

**Romania**

Bucharest  
 Tel.: +40 21 202 3032  
 Email: central\_europe@bradycorp.com

**Russia**

Moscow  
 Tel.: +7 495 269 47 87  
 Email: central\_europe@bradycorp.com

**Spain & Portugal**

Madrid, Spain  
 Tel.: +34 900 902 993  
 Email: spain@bradycorp.com,  
 portugal@bradycorp.com

**Sweden, Finland, Baltic states**

Kista, Sweden  
 Tel.: +46 (0) 8 590 057 30  
 Email: sweden@bradyeurope.com

**Turkey**

Istanbul  
 Tel.: +90 212 264 02 20 / 264 02 21  
 Email: turkey@bradycorp.com

**UK & Ireland**

Banbury, UK  
 Tel.: +44 (0) 1295 228 288  
 Email: uk@bradycorp.com

# We identify and protect people, products and premises.



To help minimise our impact on the environment, Brady limits its number of reprints.

Updated versions are always available for download on [www.bradyeurope.com](http://www.bradyeurope.com).

 Search for: EUR-M-097-EN

Your distributor

**GSH Identification Solutions B.V.**  
 Lelystraat 93K  
 3364 AH Sliedrecht  
 Tel. +31 (0) 184 421 859  
[www.gsh-id.nl](http://www.gsh-id.nl)  
[info@gsh-id.nl](mailto:info@gsh-id.nl)

16/03/2020